



TOW Night Sight Depot



A depot level capability for the repair of TOW 2 Night Sight Equipment Sets.

For more than 30 years, ADS has been in continuous production and remains the sole manufacturer of the AN/UAS-12 Night Sight Equipment Set. Over this period, we have manufactured and shipped over 16,000 of the various configurations of the equipment sets to U.S. Government and International customers. Throughout the life of this product, ADS has remained committed to providing the best level of support for the system ensuring customers have a quick repair turnaround for inoperative components.

In an effort to provide international customers a level of autonomy with regard to component repair, ADS has developed an exportable depot level repair package that allows users to have a major repair capability in-country.* The package consists of several pieces of critical test equipment, special tooling, repair manuals and training. Through the implementation of an in-country depot level capability, customers can reduce their repair turnaround time considerably and put serviceable units back in the field where they belong instead of returning them to the factory.

Based on a need to provide effective and rapid training for every maintainer, the depot level repair package is capable of repairing both the older first generation AN/TAS-4A TOW Night Sight and the newer AN/TAS-4SOI. Depending on customer needs, ADS will provide a complete assortment of spares with the depot level equipment to ensure superior repair capability.

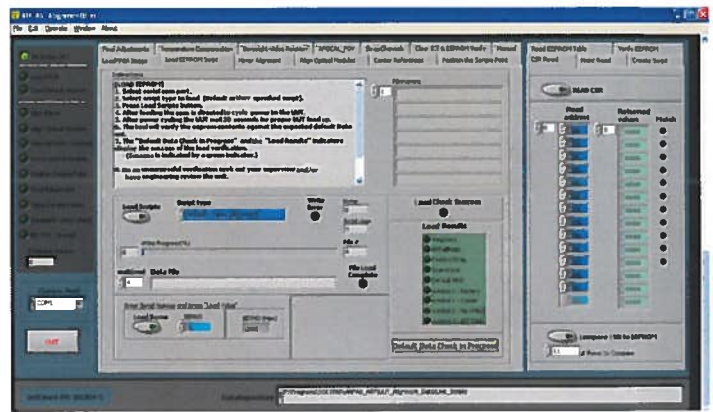
The ADS training approach is designed to provide maintenance technicians, regardless of their experience level, with the knowledge and skills required to troubleshoot and repair the system. A key output is performance-based and criterion referenced instruction which promotes student transfer of learning from an instructional setting to the job. The maintenance course will provide the overall system capabilities, including preventative and corrective maintenance skills and tasks.

ADS presents a comprehensive solution to international customers affording them in country repair capabilities, testing to certified standards, and maintaining a rotatable stock inventory maintain high operational readiness requirements.

To help the customer accomplish these tasks, features of the TOW Night Sight Depot Package include special tooling, manuals, repair and test fixtures, test equipment, repair software, and spare parts. Training to operate the equipment and to perform the repair tasks in the depot can be provided by ADS technicians upon request.

Key to the supportability of the TOW Night Sight is the ADS laptop-based Maintenance, Troubleshooting and Alignment software included in the depot package. For those already with a depot capability, previous versions of the software used for initialization, alignment and fault-isolation are upgradeable. The newer version of the software provides equipment maintainers a centralized application where manuals, drawings and procedures used to maintain the equipment can be accessed. Information is related in graphical form with easy to use click and go access to setup, maintenance operations and reference retrieval. The System Fault Isolation Section of the software provides guidance via a fault tree and hot links to maintenance manuals, procedures, drawings and fault-isolation directions. The Circuit Card Assembly Troubleshooting Section provides

guidance via another fault tree and hot links to schematics, assembly drawings and troubleshooting directions. The Alignment Software can be used by maintainers to take a newly assembled unit and execute all alignment operations, both electronic and mechanical, in proper order using instructional text and sequenced illustrations. The software also produces factory values and files and records for maintenance or reuse by maintenance depot operations to restore a unit to factory settings. Use of this specialized software makes the job of an in-country maintainer much easier and ensures a rapid turn-around of equipment to the field.



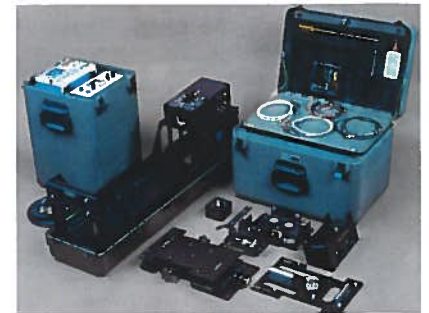
AN-TAS Alignment Tool



AN/TAS-4SOI components



AN-TAM 5



AN-TAM 3A
Thermal Night Sight Test Set

* U.S. Government authorization required

ADS

Advanced Defense Systems, Inc.

www.ads-inc.com
220 Daniel Webster Highway
Merrimack, NH 03054

Tel: (603) 595-5160 • Fax: (603) 595-5175

